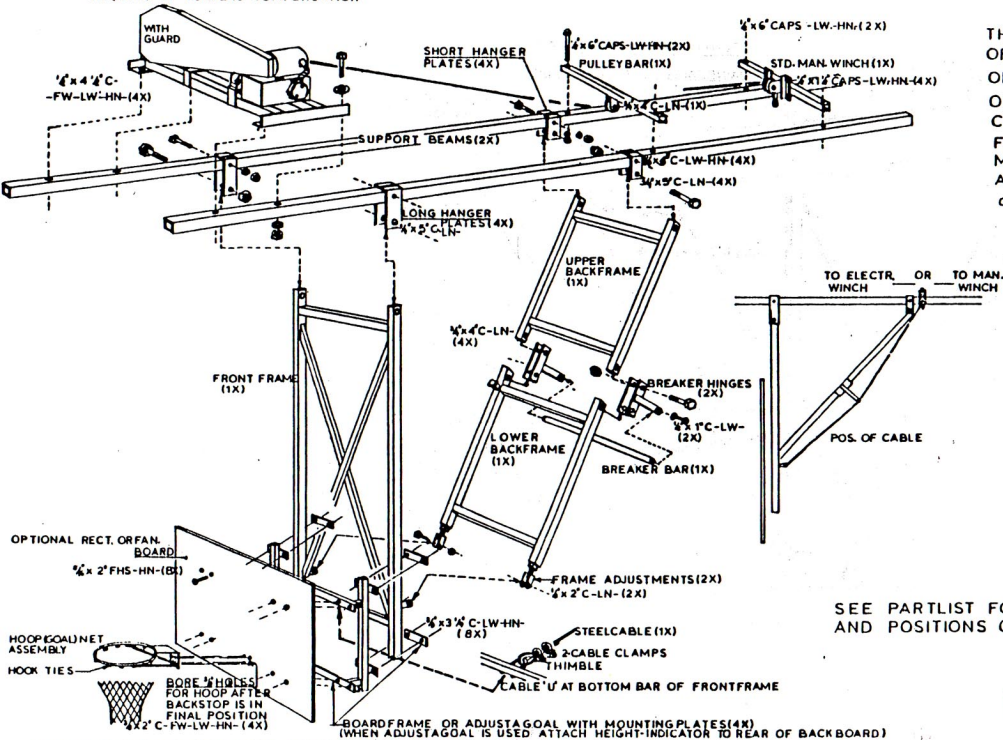


ASSEMBLY INSTRUCTIONS FOR #100 CEILING FOLD BASKETBALL BACKSTOP (BACKWARDFOLD)

OPTIONAL: ELECTRIC WINCH
 GUARD ON POWERWINCH IS
 REQUIRED BY WORKERS COMPENSATION



THERE ARE DIFFERENT TYPES OF CEILING STRUCTURES; OPEN TRUSS, GLUELAMBEAM OR CLOSED CEILINGS. CLAMPS WILL BE SUPPLIED FOR SPECIFIED CEILING. BEAMS MAY BE BORED WHEN CLAMPS ARE IN FINAL POSITION.

- | | | |
|-----------|---|-------------------------------------|
| CAPS OR C | — | CAPSCREW |
| FL | — | FLAT WASHER |
| LW | — | LOCK WASHER |
| HN | — | HEXAGON NUT |
| LN | — | LOCK NUT |
| FHS | — | FLAT HEAD STOVEBOLT (MACHINE SCREW) |

SEE PARTLIST FOR DESCRIPTION OF MATERIALS AND POSITIONS OF NUTS AND BOLTS ETC.

VIKING-ALEXANDER-METAL-PROD.LTD.
 1661 EAST HASTINGS-VANCOUVER, B.C.